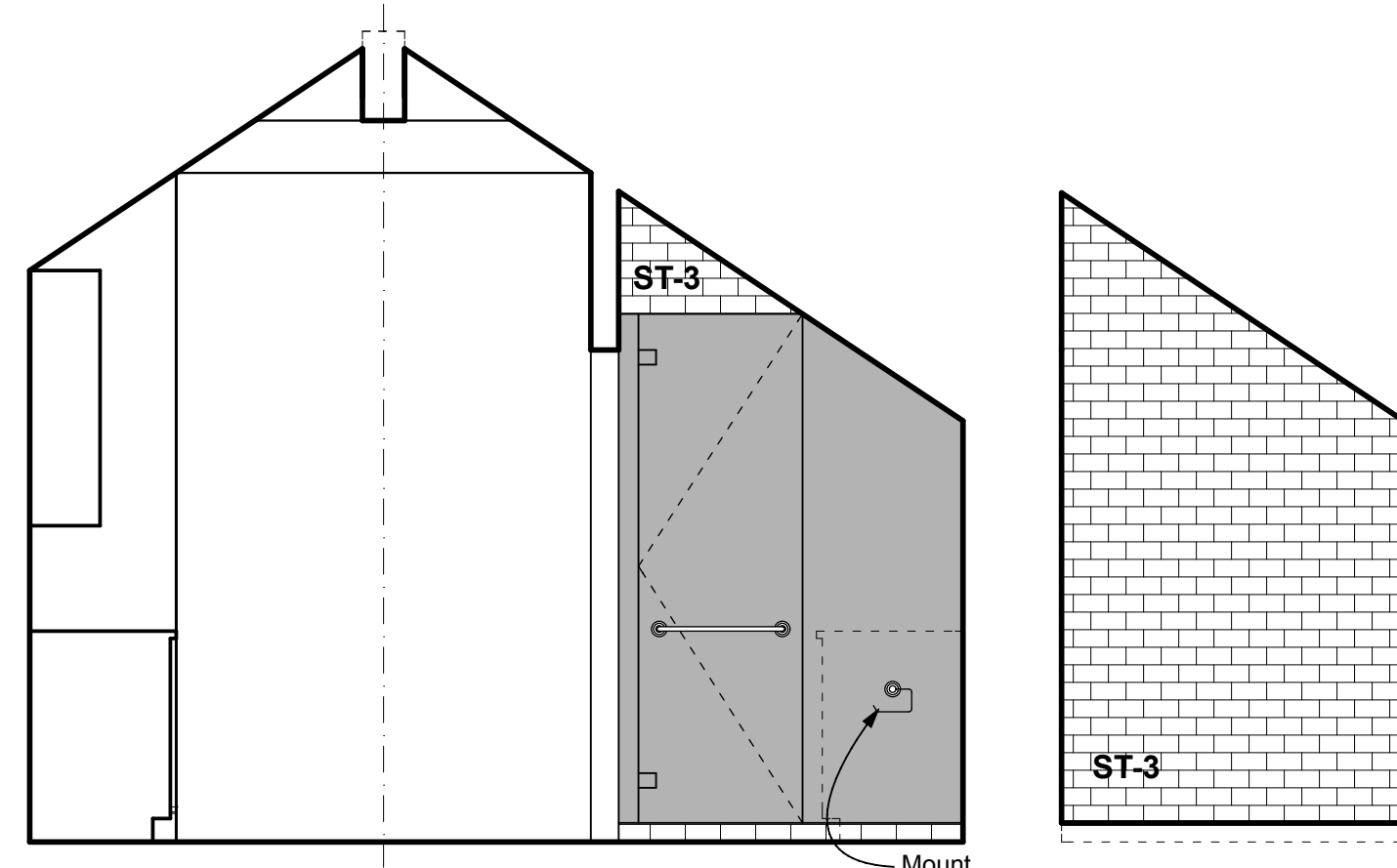


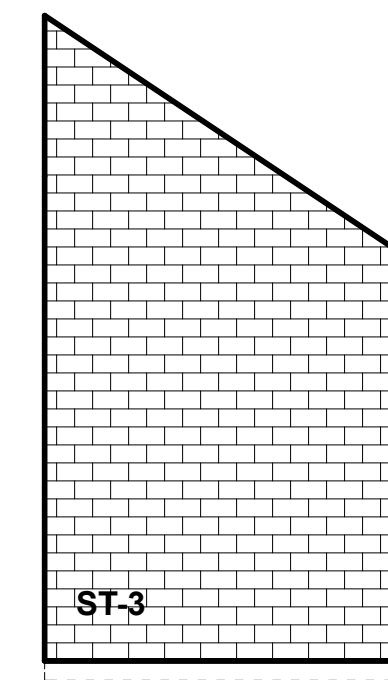
Plan / Guest Bath / Guest Entry
Scale 3/8" = 1'-0"

**GUEST
BATH
KEY**

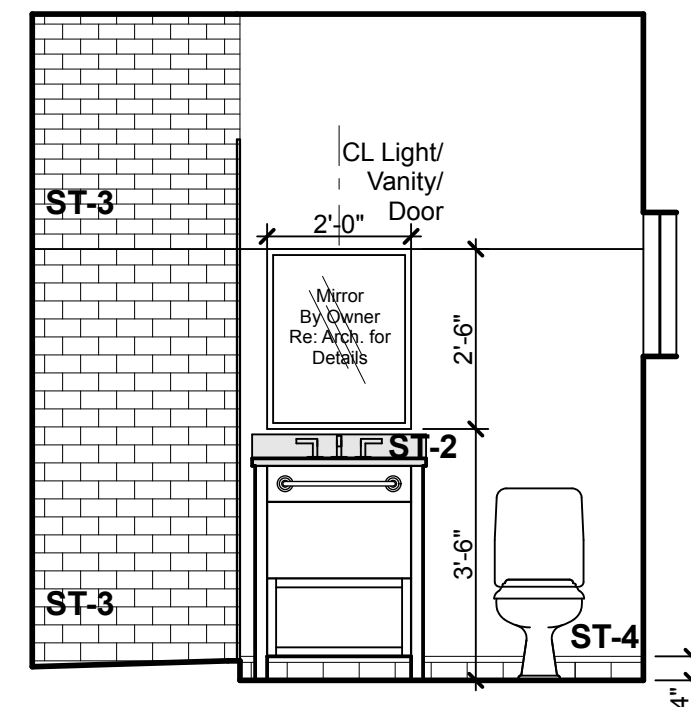
- ST-1** 6x6 Floor Tiles
- ST-2** 3cm Slab with 1 1/4" tall nosing, 4" Back Splash recessed 5/8" into Drywall at Bathroom Vanity only
- ST-3** Wall Tiles, 3x6 Subway Tiles, Niche
- ST-4** Base Tiles, with 1" x 6" American Olean, Bright Ice White Ceramic Quarter Round Tile Common, on 3"x6" Subway Tile
- ST-5** 2x2 Floor Tiles in 12x12 sheets



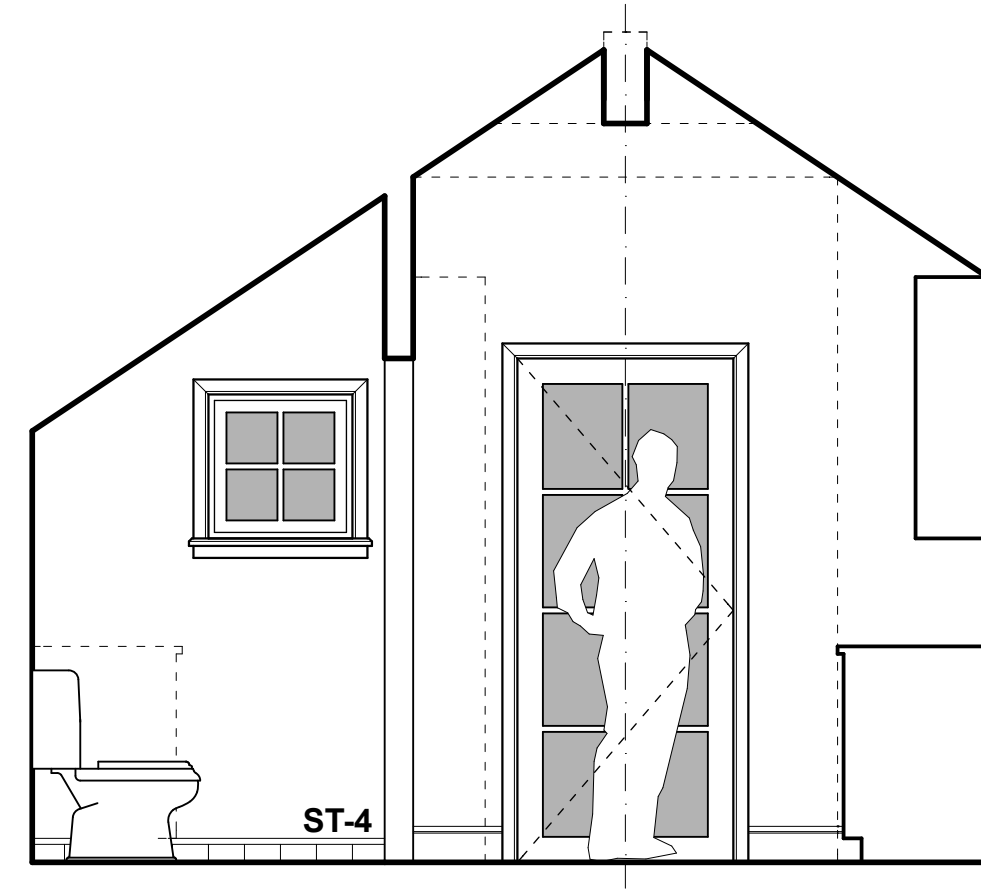
1 Guest Entry / Guest Bath / North
Scale 3/8" = 1'-0"



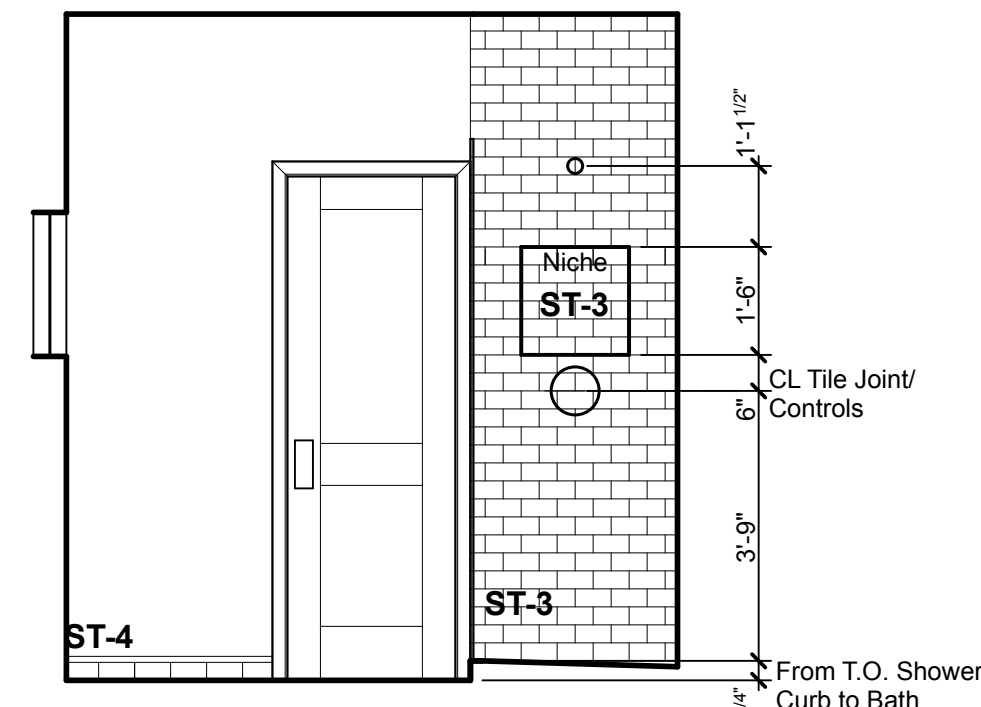
2 Guest Shower / North
Scale 3/8" = 1'-0"



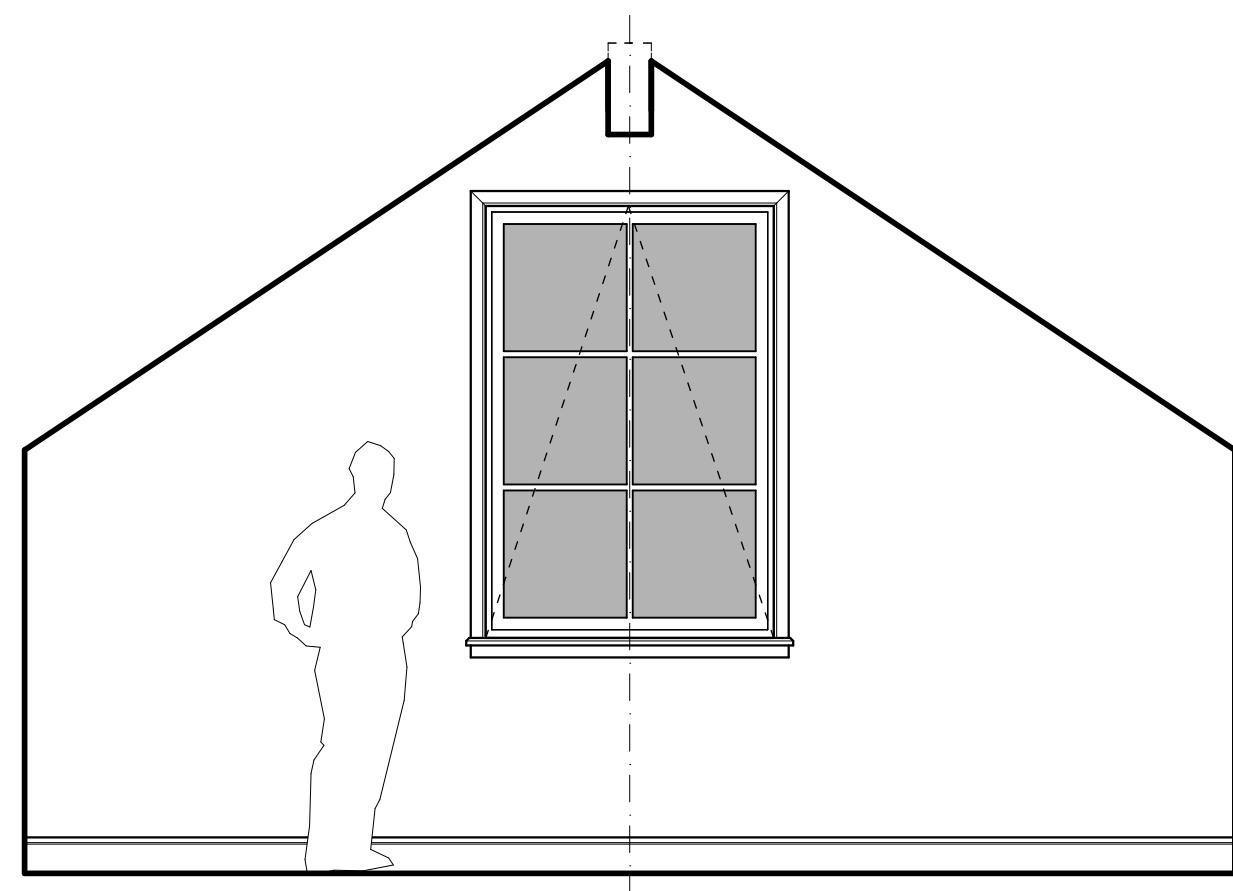
3 Guest Bath / East
Scale 3/8" = 1'-0"



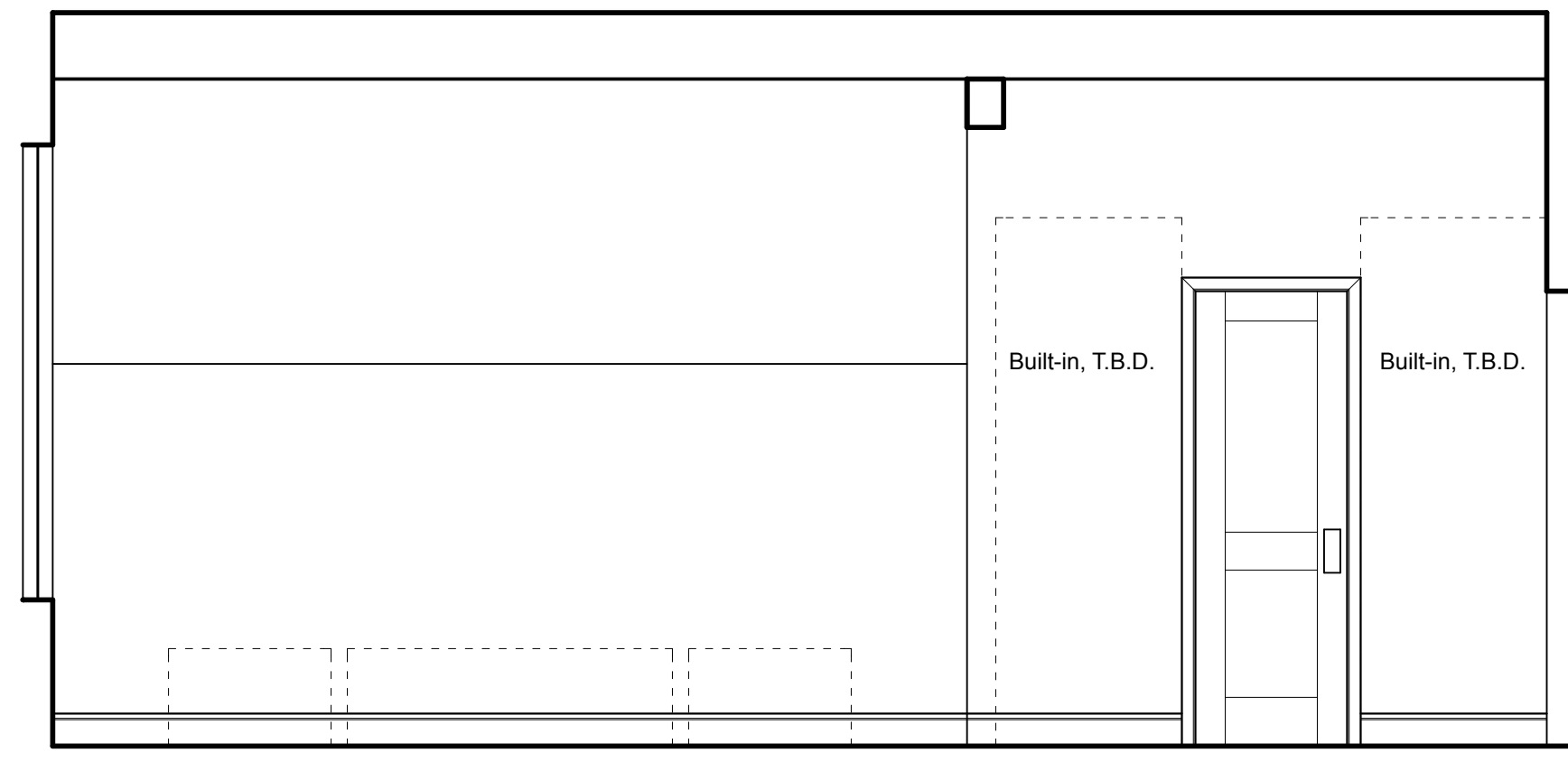
4 Guest Bath / Guest Entry / North
Scale 3/8" = 1'-0"



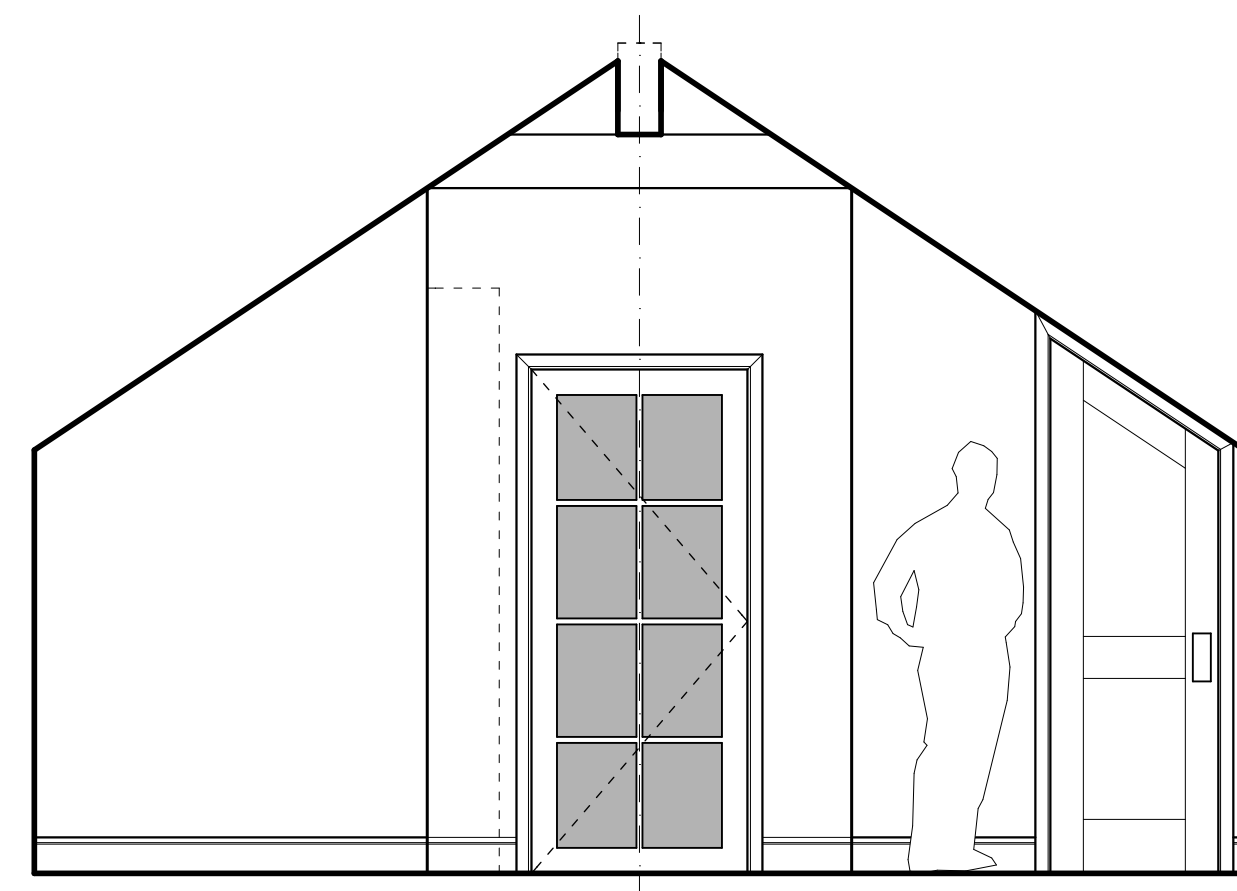
5 Guest Bath / West
Scale 3/8" = 1'-0"



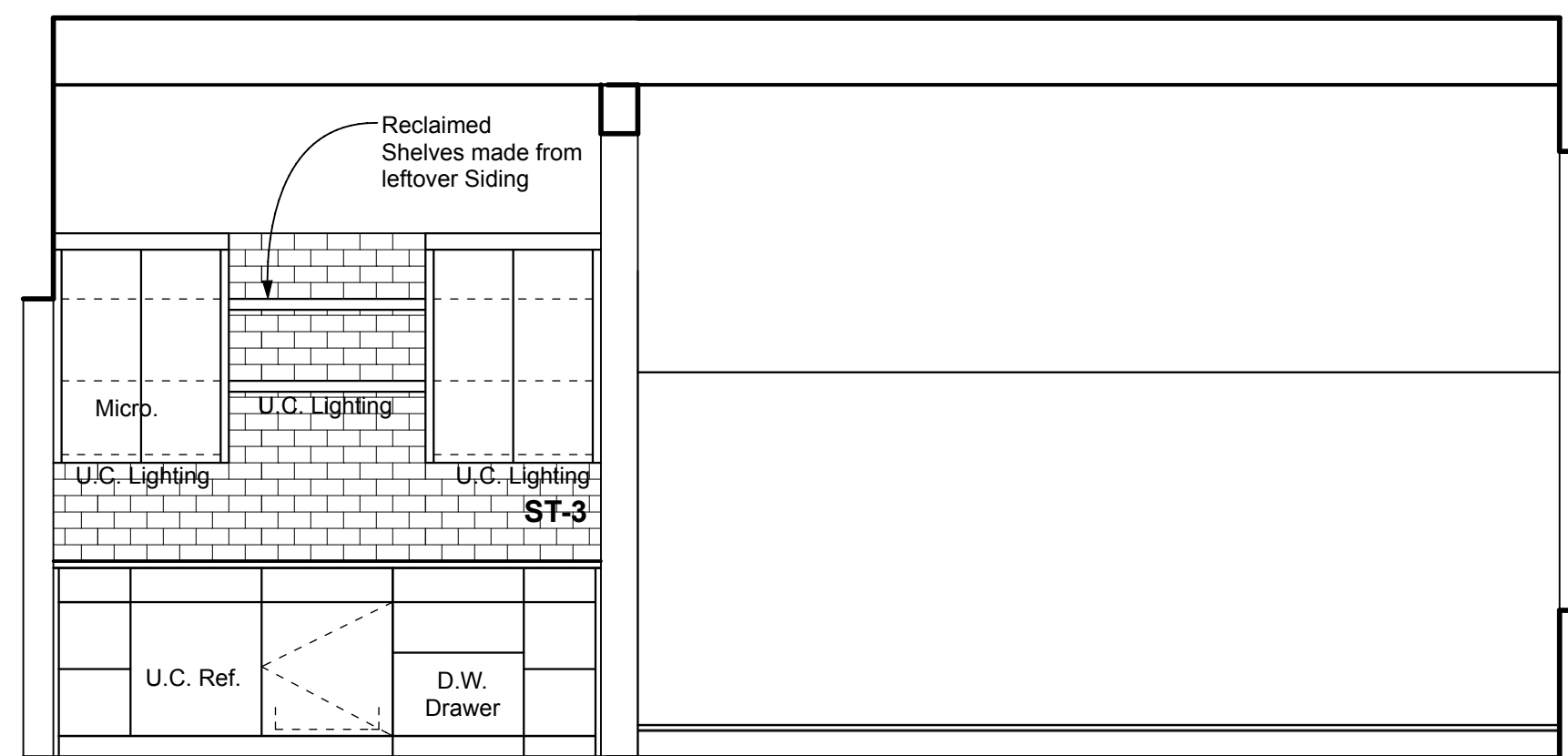
6 Guest Bedroom / North
Scale 3/8" = 1'-0"



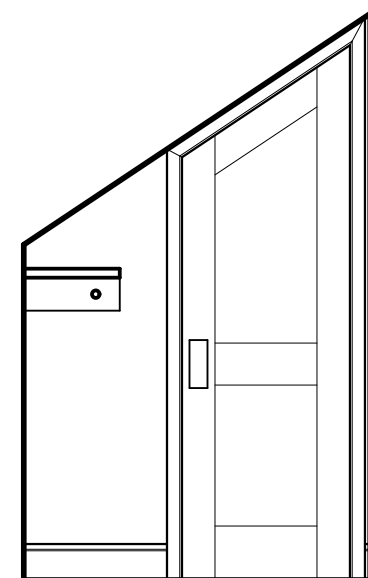
7 Guest Bedroom / Guest Entry / East
Scale 3/8" = 1'-0"



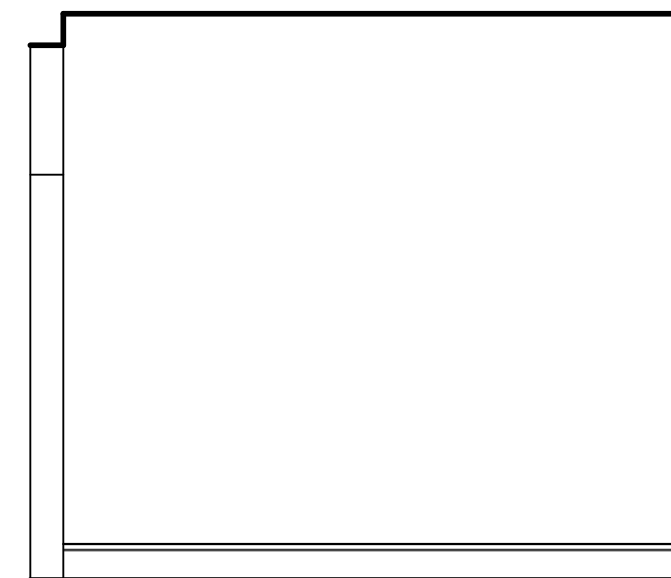
8 Guest Bedroom / South
Scale 3/8" = 1'-0"



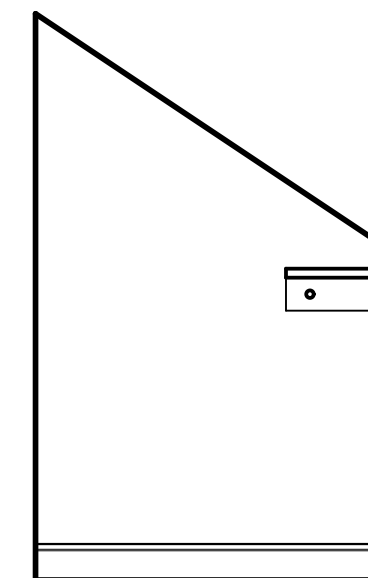
9 Guest Entry / Guest Bedroom / West
Scale 3/8" = 1'-0"



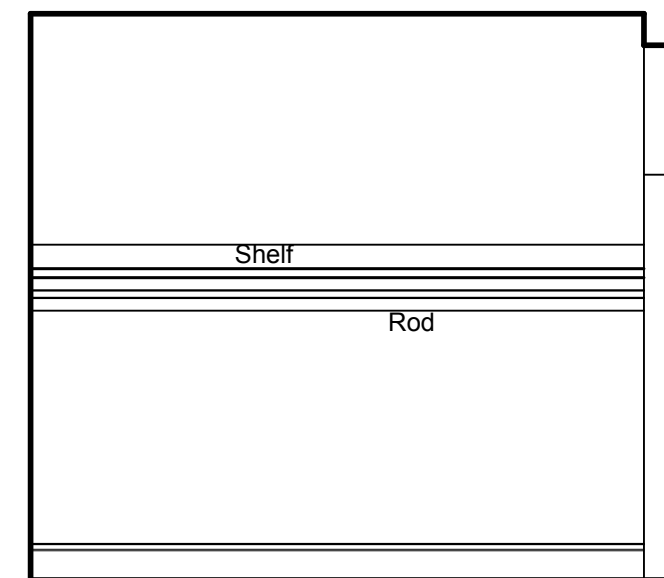
10 Guest Closet / North
Scale 3/8" = 1'-0"



11 Guest Closet / East
Scale 3/8" = 1'-0"



12 Guest Closet / South
Scale 3/8" = 1'-0"



13 Guest Closet / West
Scale 3/8" = 1'-0"